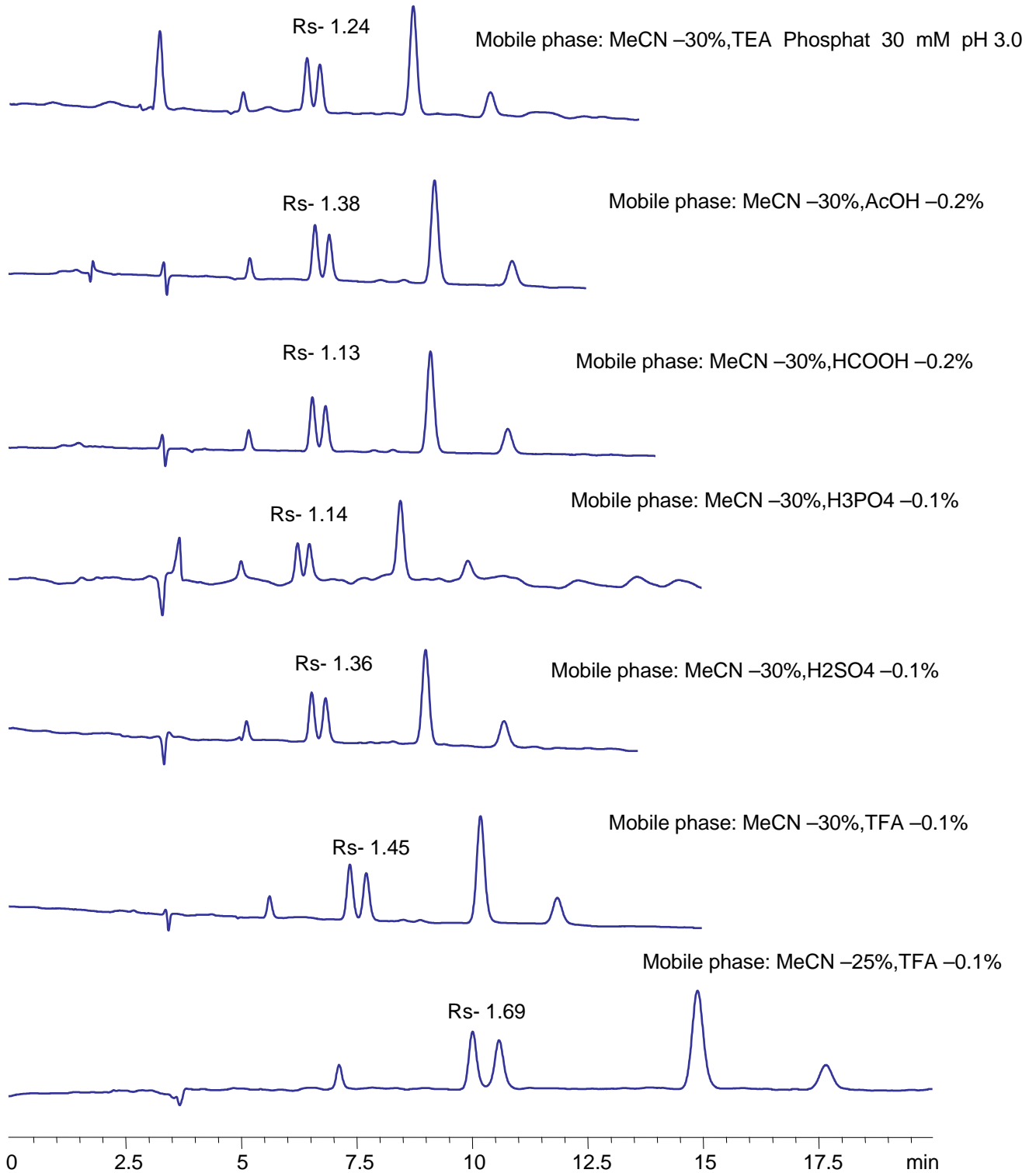


Column: Primesep PB, 250 x 4.6 mm
Flow rate: 1.0 mL/min
Injection: 5 uL
Detection: UV 270 nm

Screening of Different Buffer Systems on Primesep PB



Screening of Different Buffer Systems on Primesep P

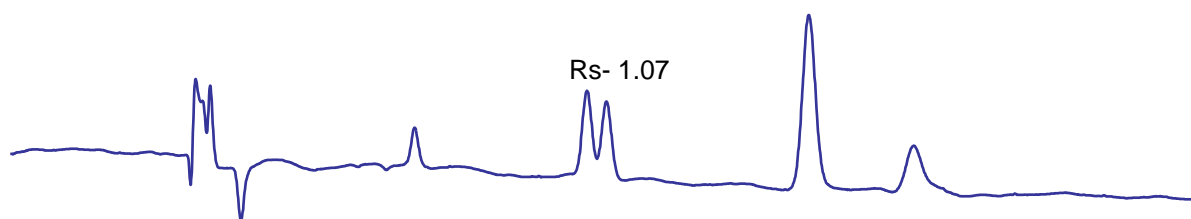
Column: PrimesepP, 250 x 4.6 mm

Flow rate: 1.0 mL/min

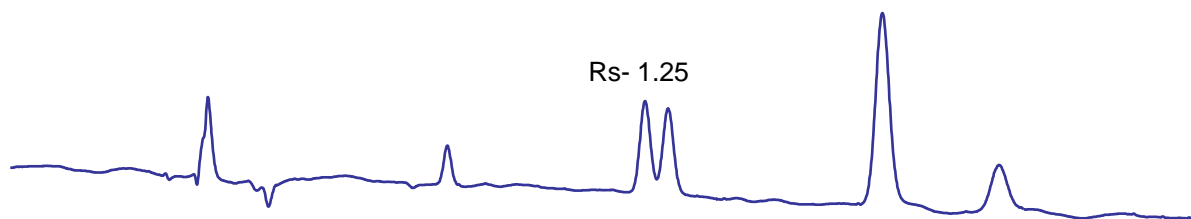
Injection: 5 μ L

Detection: UV 270 nm

Mobile phase: MeCN -30%,TEA Acetate 25 mM pH 3.6



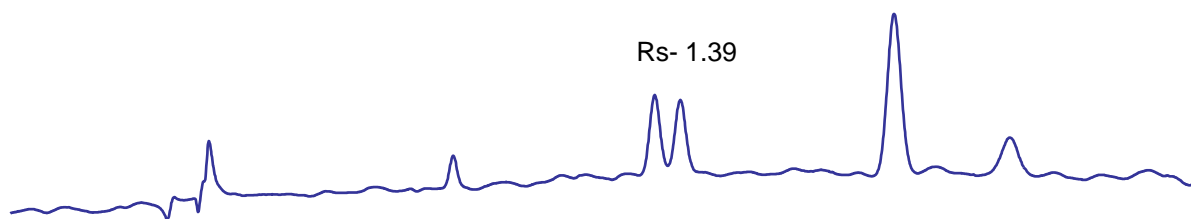
Mobile phase: MeCN -30%,TEA Phosphat 30 mM pH 3.0



Mobile phase: MeCN -30%,TEA Phosphat 25 mM pH 2.5



Mobile phase: MeCN -30%,TEA Phosphat 25 mM pH 2.0



0 2.5 5 7.5 10 12.5 15 17.5 min

Screening of Different Buffers Systems on Primesep P

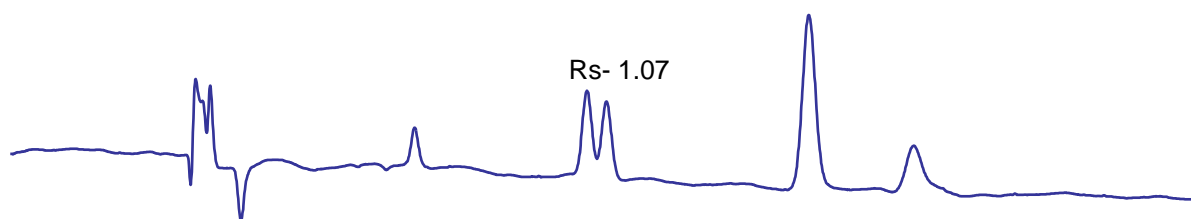
Column: Primesep P, 250 x 4.6 mm

Flow rate: 1.0 mL/min

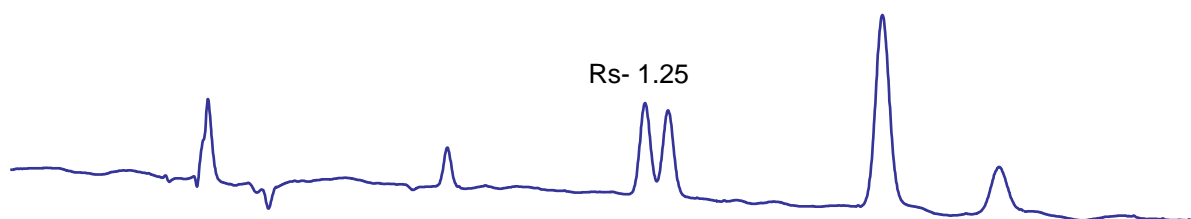
Injection: 5 μ L

Detection: UV 270 nm

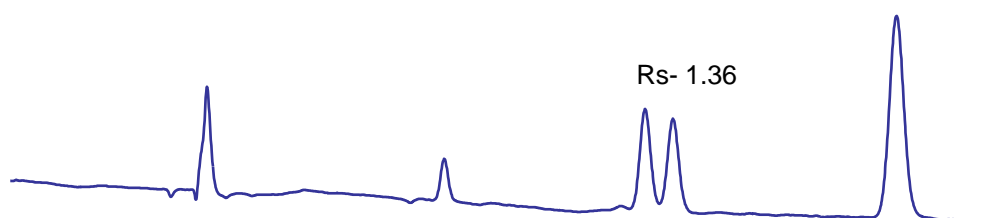
Mobile phase: MeCN -30%, TEA Acetate 25 mM pH 3.6



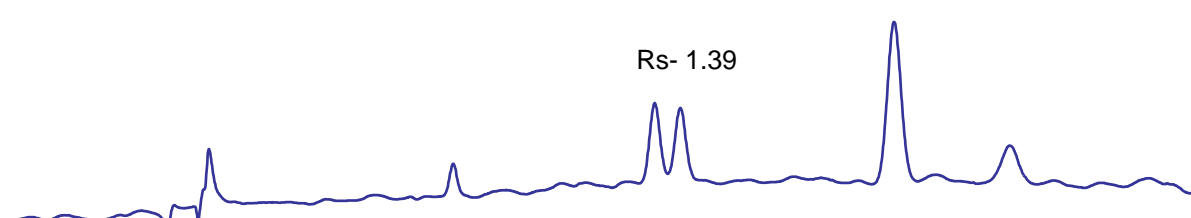
Mobile phase: MeCN -30%, TEA Phosphat 30 mM pH 3.0



Mobile phase: MeCN -30%, TEA Phosphat 25 mM pH 2.5



Mobile phase: MeCN -30%, TEA Phosphat 25 mM pH 2.0



0 2.5 5 7.5 10 12.5 15 17.5 min