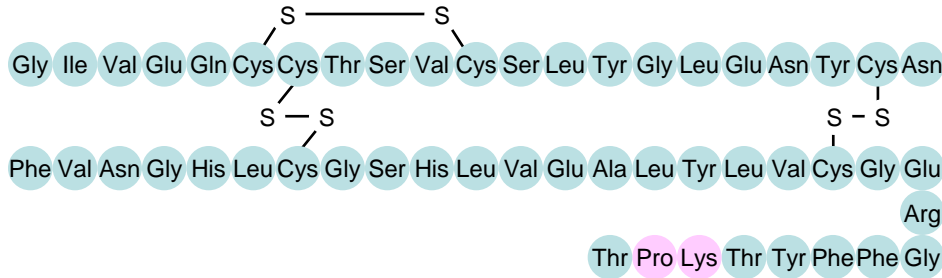
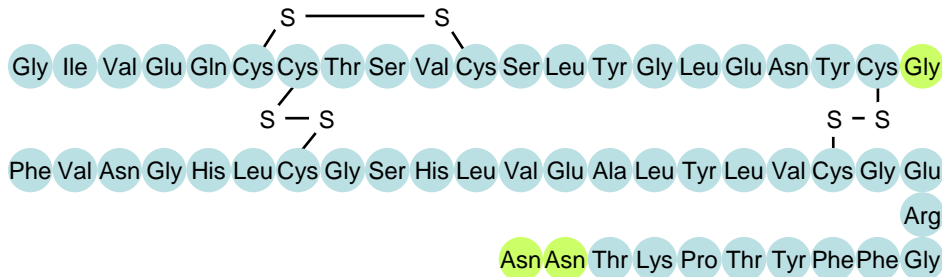


Normal human insulin.

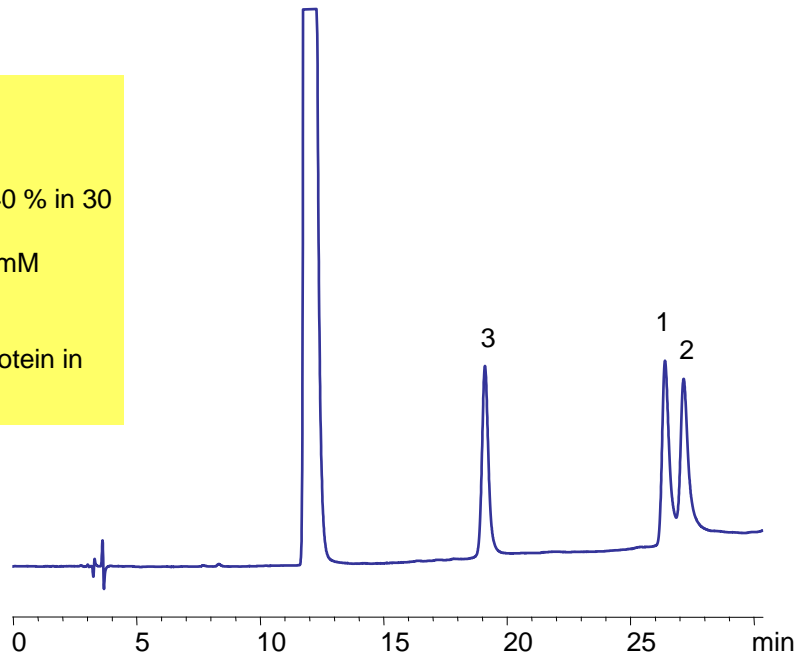


Synthetic insulin Humalog.



Synthetic insulin Lantus.

Column: Promix™
 Size: 4.6 x 250 mm
 Flow rate: 1.0 ml/min
 MeCN: gradient 20% to 40 % in 30 min
 Buffer: AmAc pH 3.5 25 mM
 Detector: UV 270 nm
 Injection: 5 uL
 Sample: 30 cc/mL each protein in water 1 mL



1. Normal human insulin
2. Synthetic insulin Humalog
3. Synthetic insulin Lantus