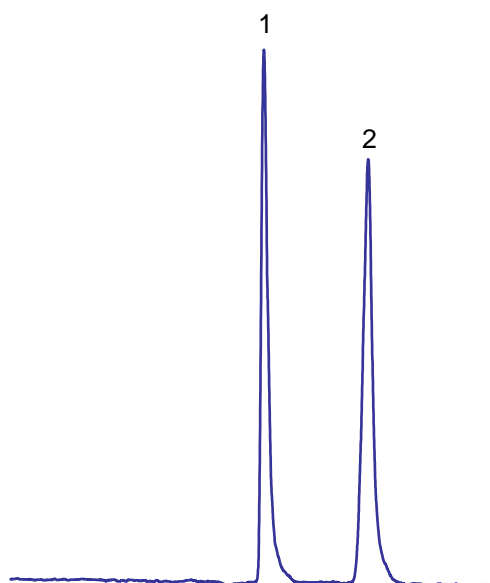
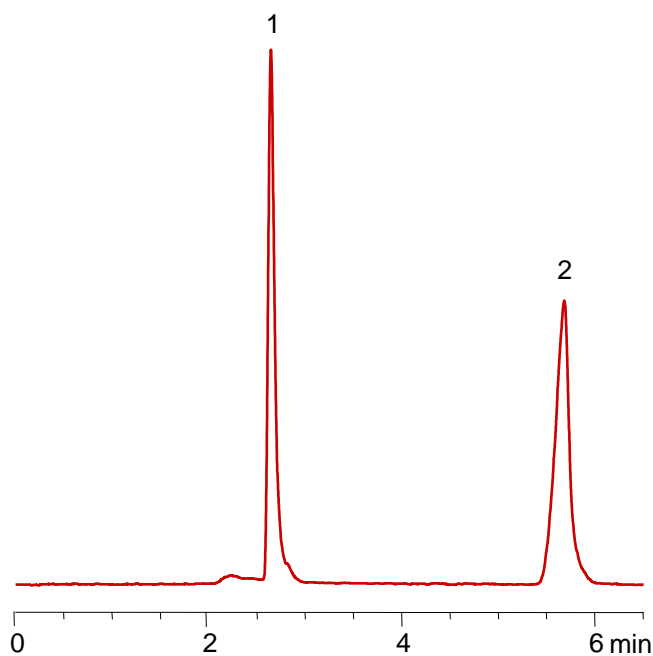


1. Succinic acid
2. Sodium ion

**Column:** Primesep 100,  
**Size:** 150 x 4.6 mm  
**Flow rate:** 1.0 mL/min  
**Injection:** 20 uL  
**Detection:** ELSD



**Mobile phase:** MeCN-5%, TFA – 0.2%



**Mobile phase:** MeCN-5%, TFA – 01%