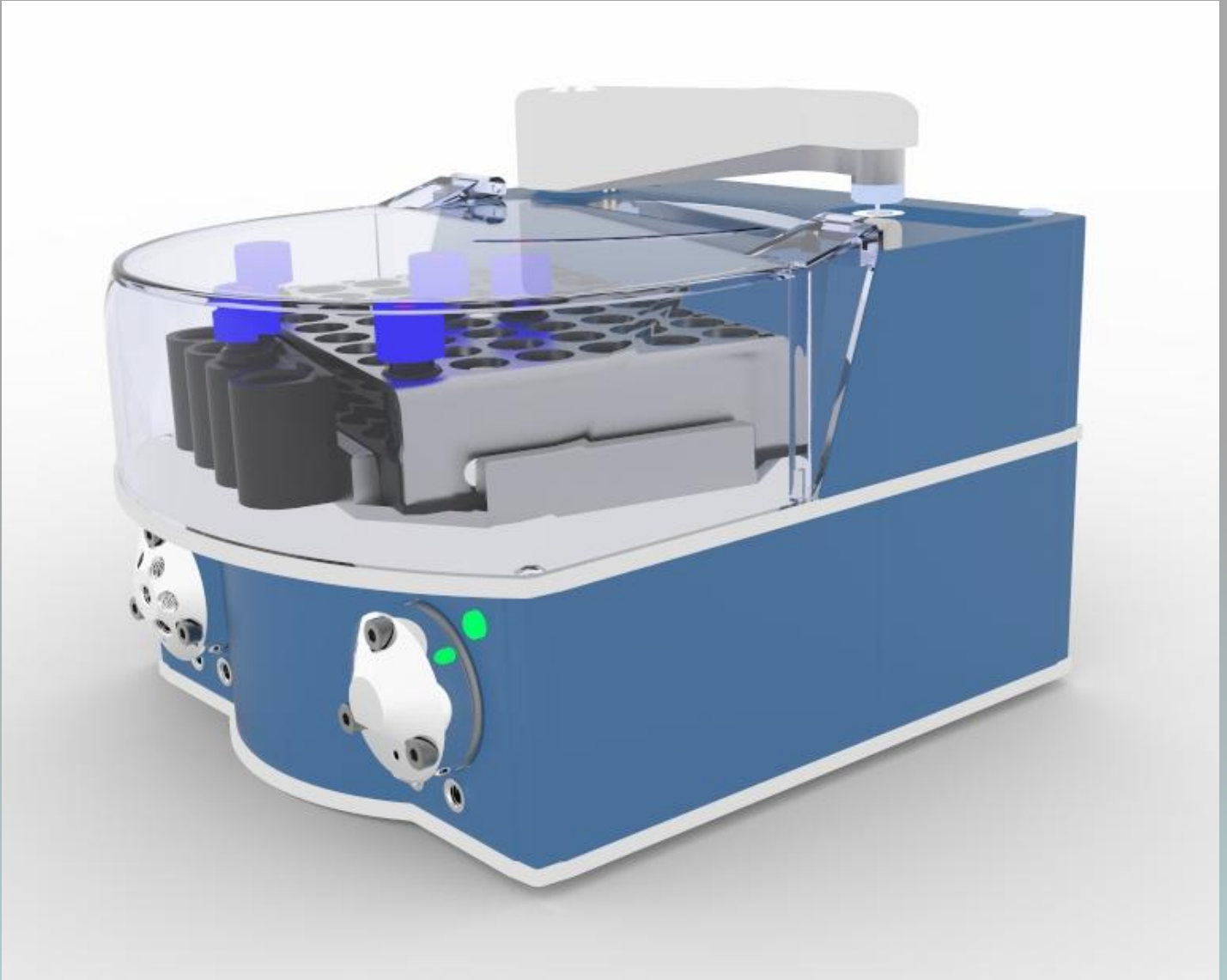


Alltesta™ Autosampler Schematics

Storage and transfer of samples to a detector with a small cell volume for analysis.

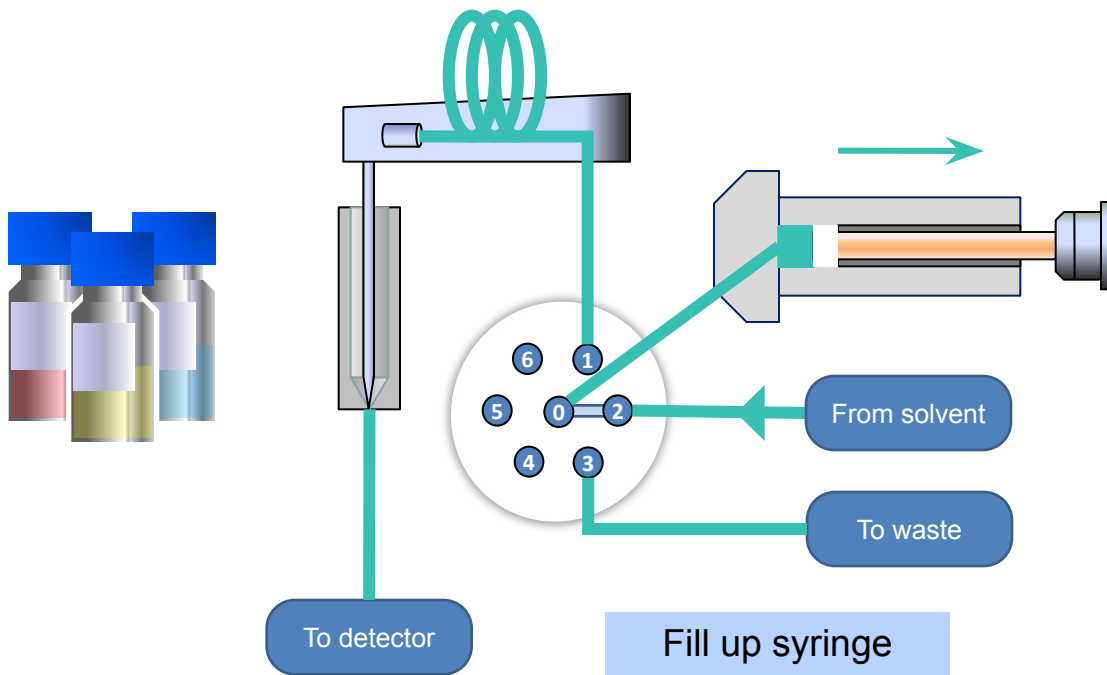
Configuration: Valve 7x6
Syringe 4000 μL



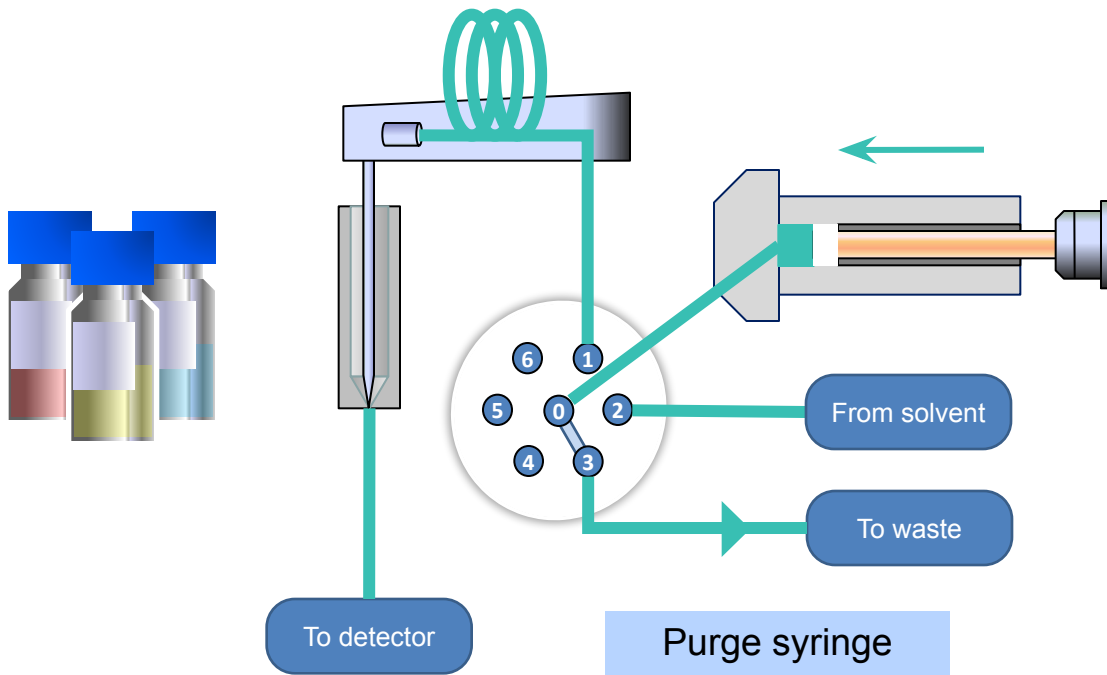
This autosampler application allows to automate sample storage and delivery to a detector cell such as optical spectrometer, colorimeter, pH meter, conductivity detector or similar. Accurate variable sample volume can be delivered to a line connected to the detector cell. Additional functions includes sample mixing, needle cleaning with up to 4 solutions, sample shaking. Sample storage capacity is 48 vials with 2 mL volume or 96 well plate.

Small detector cell volume

1

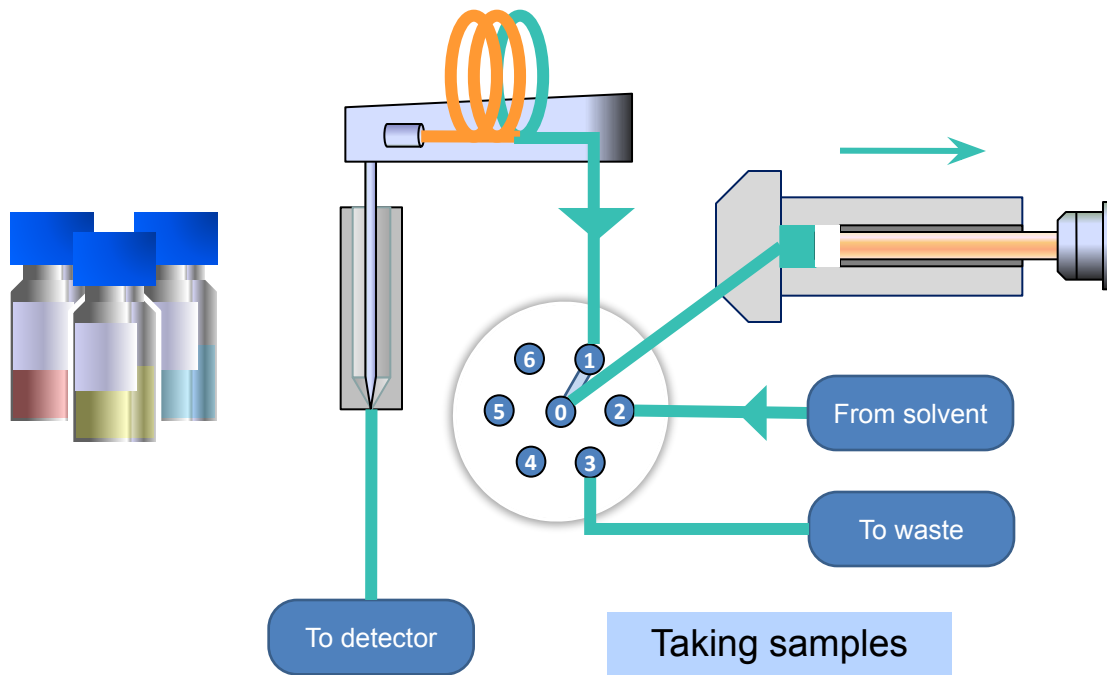


2



Small detector cell volume

3



4

