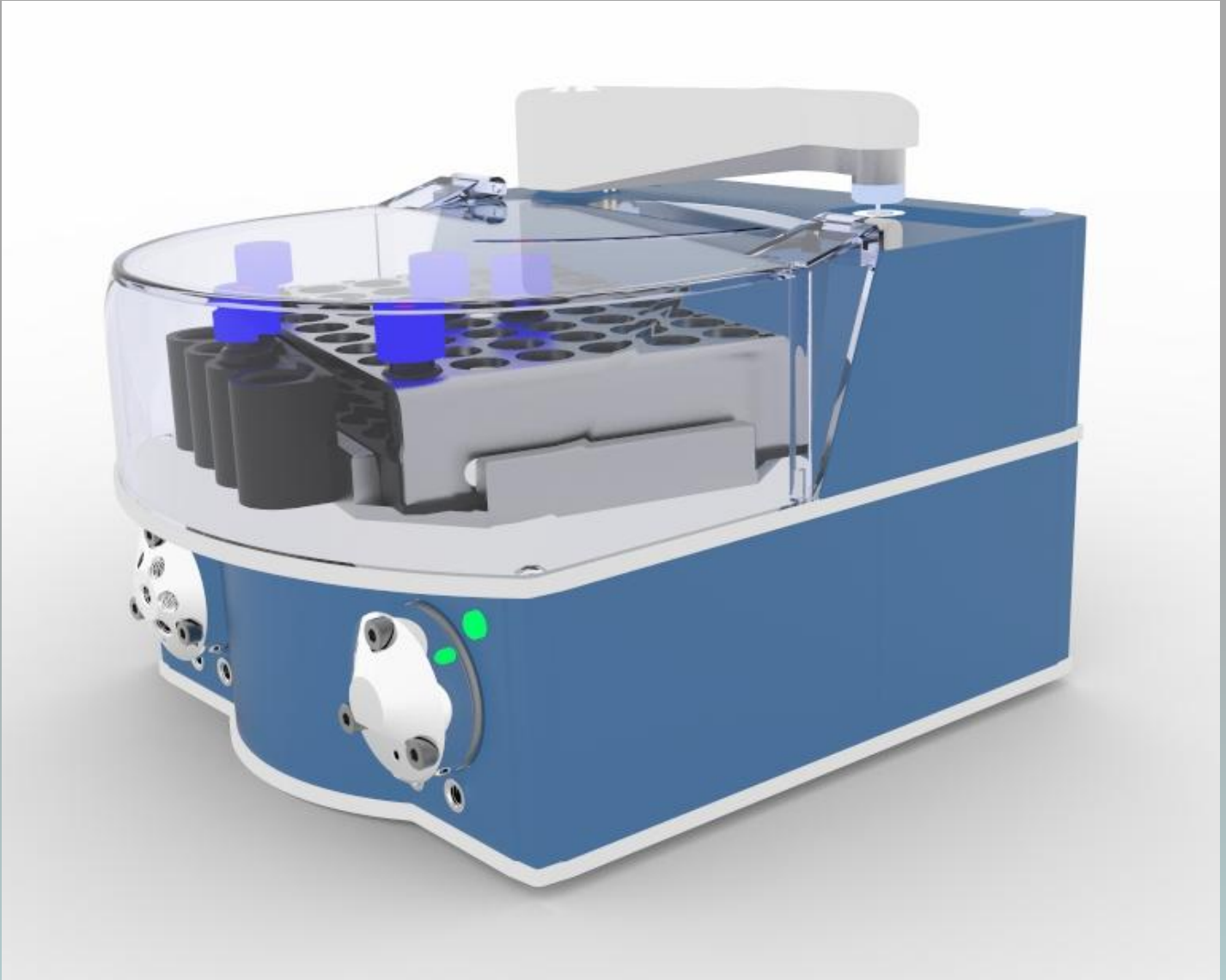


# Alltesta™ Autosampler Schematics

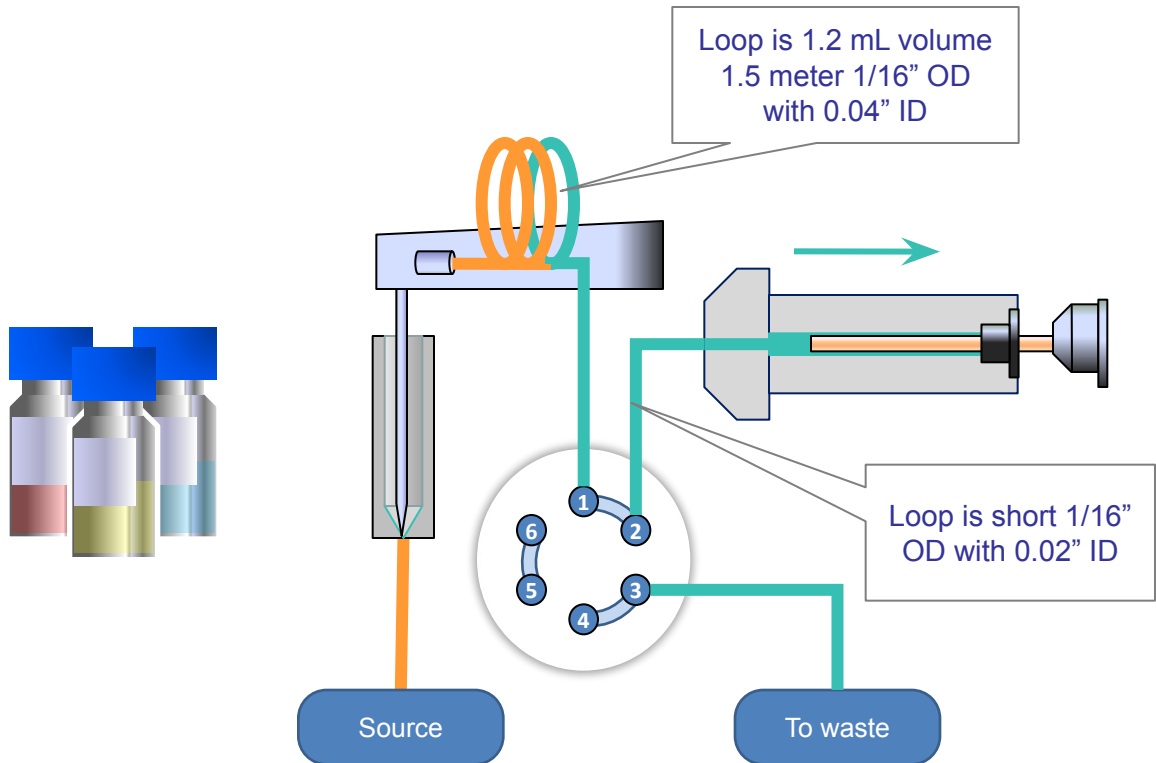
Collection and storage of samples from a source such as chemical reactor, fermentor, production vessel or pipeline.

Configuration: Valve 2x6  
Syringe 4000  $\mu\text{L}$

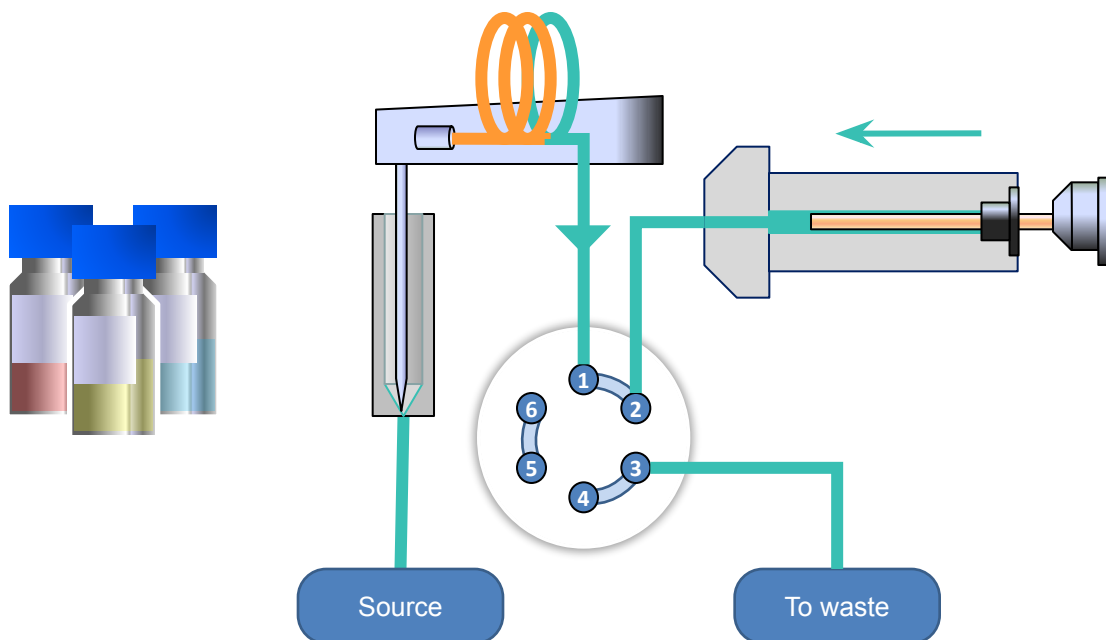


This autosampler application allows to automate sample retraction and storage for farther analysis or as a representative record. Accurate variable sample volume can be sampled with all connected tubing washing stage with several different solvents. Additional functions includes sample mixing with some stabilization solutions or reagent, needle cleaning with up to 4 solutions, sample shaking. Sample storage capacity is 48 vials with 2 mL volume or 96 well plate. The loop and connection tubings can be of different length, ID and volume.

# Low Pressure High Syringe Volume

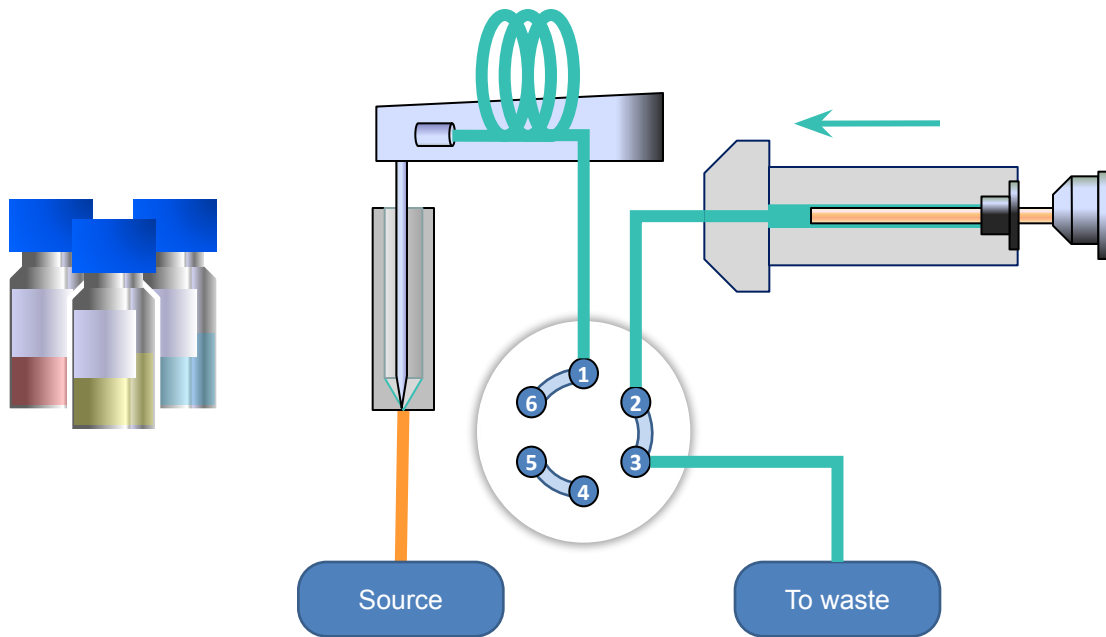


Fill up Loop



Fraction delivery to a vial

# Low Pressure High Syringe Volume



Empty syringe to eliminate air